

ENGELSKA

Together we can  
improve security in  
your neighbourhood



# Would you like to help improve security in your neighbourhood?

## *Become a contact person and work with neighbourhood watch!*

As a contact person, you will be involved in the improvement of your residential area. Together with property owners, the police, the municipality and others that work in your area, you will be helping to create the conditions that reduce crime and improve security.

### **What is neighbourhood watch?**

Neighbourhood watch is about getting to know your neighbours and cooperating with, among others, property owners, the police and the municipality, in an attempt to tackle crime and insecurity in the neighbourhood. Together, people help each other to keep an eye on each other's homes and common areas such as entrance areas, play areas and garage/parking spaces.

### **The benefits of neighbourhood watch**

A well organised neighbourhood watch can

- reduce crime in your residential area
- encourage involvement and closer communities
- lead to greater security and well-being for those who live and work in the area
- increase trust between residents and other interested parties.

Swedish studies of neighbourhood watch schemes in apartment blocks have shown that day-to-day crimes decreased by approximately one third due to the scheme's activities.

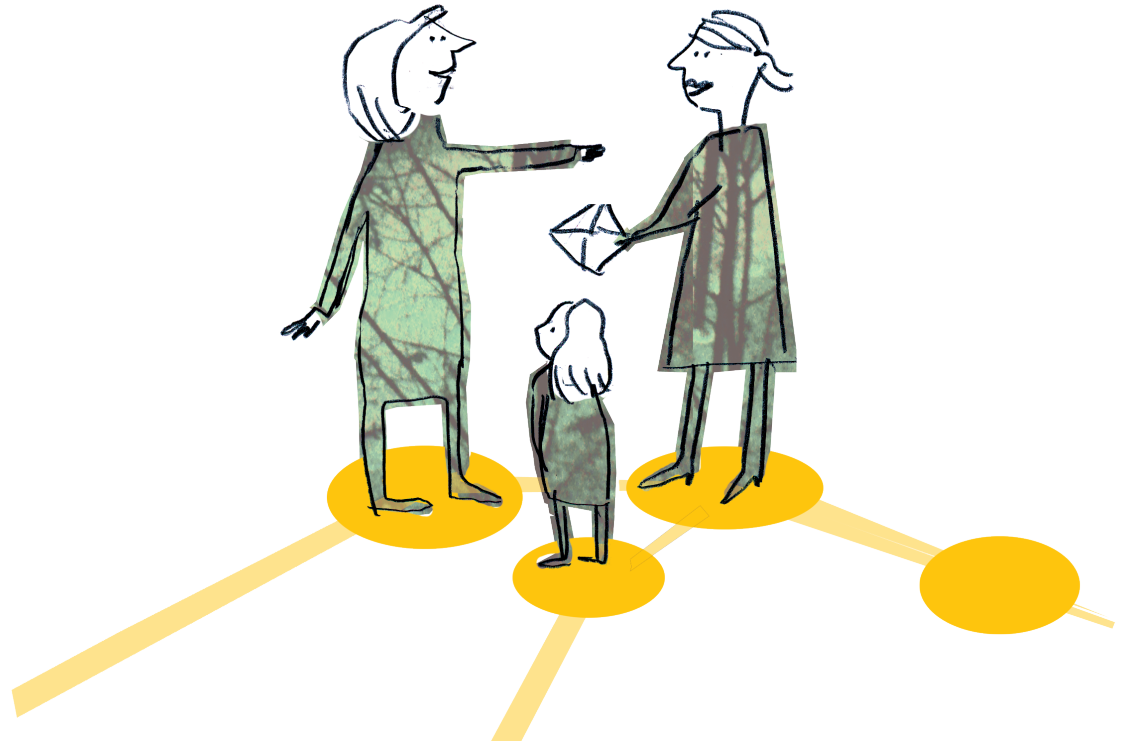
### **Your job as a contact person**

As a contact person your work is important, helping to ensure that the neighbourhood watch in your area works. It involves the following:

- receiving and passing on tips and feedback between neighbours and the primary contact person
- conveying information about neighbourhood watch to residents, including people that have recently moved into the area
- being responsible for certain practical activities such as putting up street signs and handing out window/door stickers
- participating in a neighbourhood watch training course, which among other things deals with how burglary and other crimes can be prevented
- creating commitment to the neighbourhood watch in your area.

In buildings with many apartments, it is a good idea to have one or two coordinators per stairwell. As a contact person, the apartments in your stairwell will be your main responsibility. Each stairwell could have so-called stairwell meetings, where you meet other residents to discuss security and well-being.

You can also help to create inspiration and a commitment to the neighbourhood. This does not mean you should organise crime-prevention events, the important thing is that you do something together to reinforce a positive sense of community in the area.



### Support as a contact person

As a contact person you will be supported by people from several organisations. You can expect to receive support and information from other members of the scheme, and above all, from the primary contact person.

The contact person in your area may also meet up with the primary contact person or others involved in the watch scheme to discuss general issues.

### The organisation

#### *The partnership group*

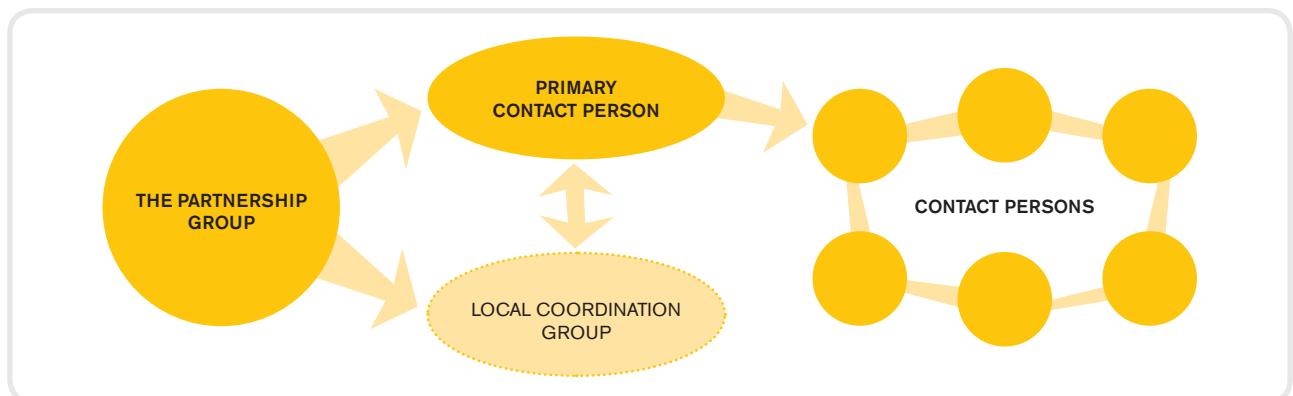
The partnership group is responsible for policy, resources, follow-up work and how the work is developing. The group consists of property owners, the residents' association, the police, municipality and others.

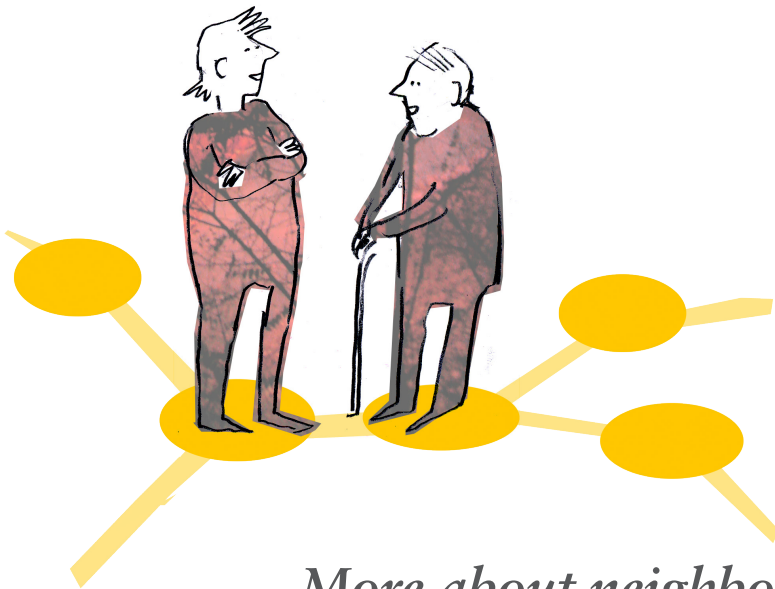
#### *Primary contact person and local coordination group*

The primary contact person is responsible for coordinating and organising the work and for ensuring that it is implemented. This person also conveys information between residents and the partnership group. There may also be a local coordination group that plans and carries out activities with the primary contact person.

#### *Contact persons*

The contact persons convey information between the primary contact person and the residents who live in a particular stairwell. It would be appropriate with one or two people on each stairwell.





## More about neighbourhood watch

### **Brottsförebyggande rådet (Brå) – (The National Council for Crime Prevention)**

This text is based on *Grannsamverkan i flerfamiljshus – en guide* (A guide to Neighbourhood Watch in multi-storey apartments). On Brå's website you can read more about how you can work with neighbourhood watch in apartment buildings, find information about different local neighbourhood watch schemes and deepen your understanding of what the research shows.

[www.bra.se/grannsamverkan](http://www.bra.se/grannsamverkan)

### **Cooperation against crime**

At a national level, the organisation *Samverkan mot brott* (Cooperation against crime) works with the concept of neighbourhood watch by spreading knowledge, developing common guidelines as well as training and information materials.

The organisations that make up *Samverkan mot brott* include the police, Brå, Sveriges Kommuner och Landsting (SKL) and SSF (previously Stöldskyddsföreningen) as well as insurance companies, property owners and housing associations.

[www.samverkanmotbrott.se](http://www.samverkanmotbrott.se)



### **Would you like to become a contact person?**

Contact the person responsible for neighbourhood watch in your area for more information: